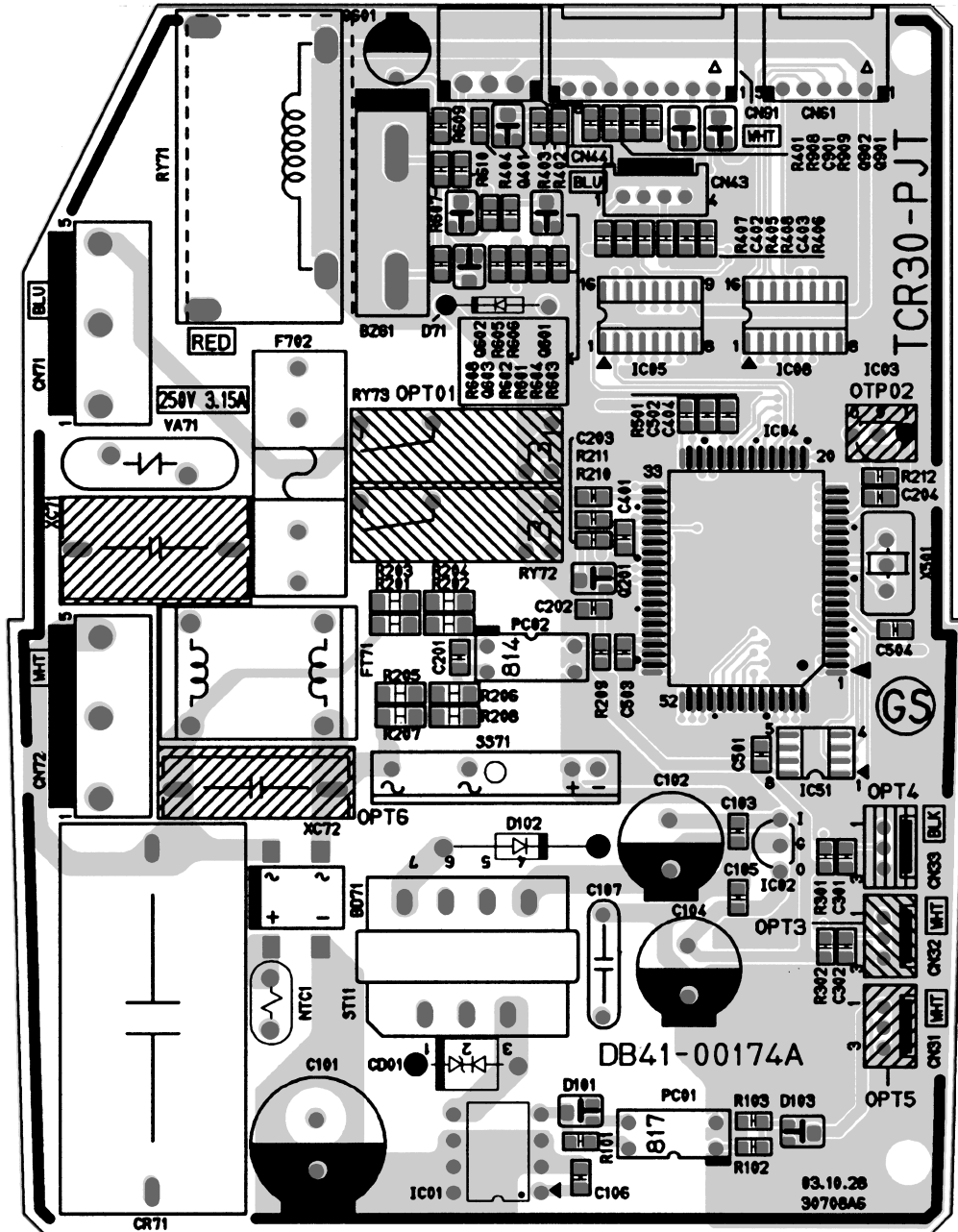


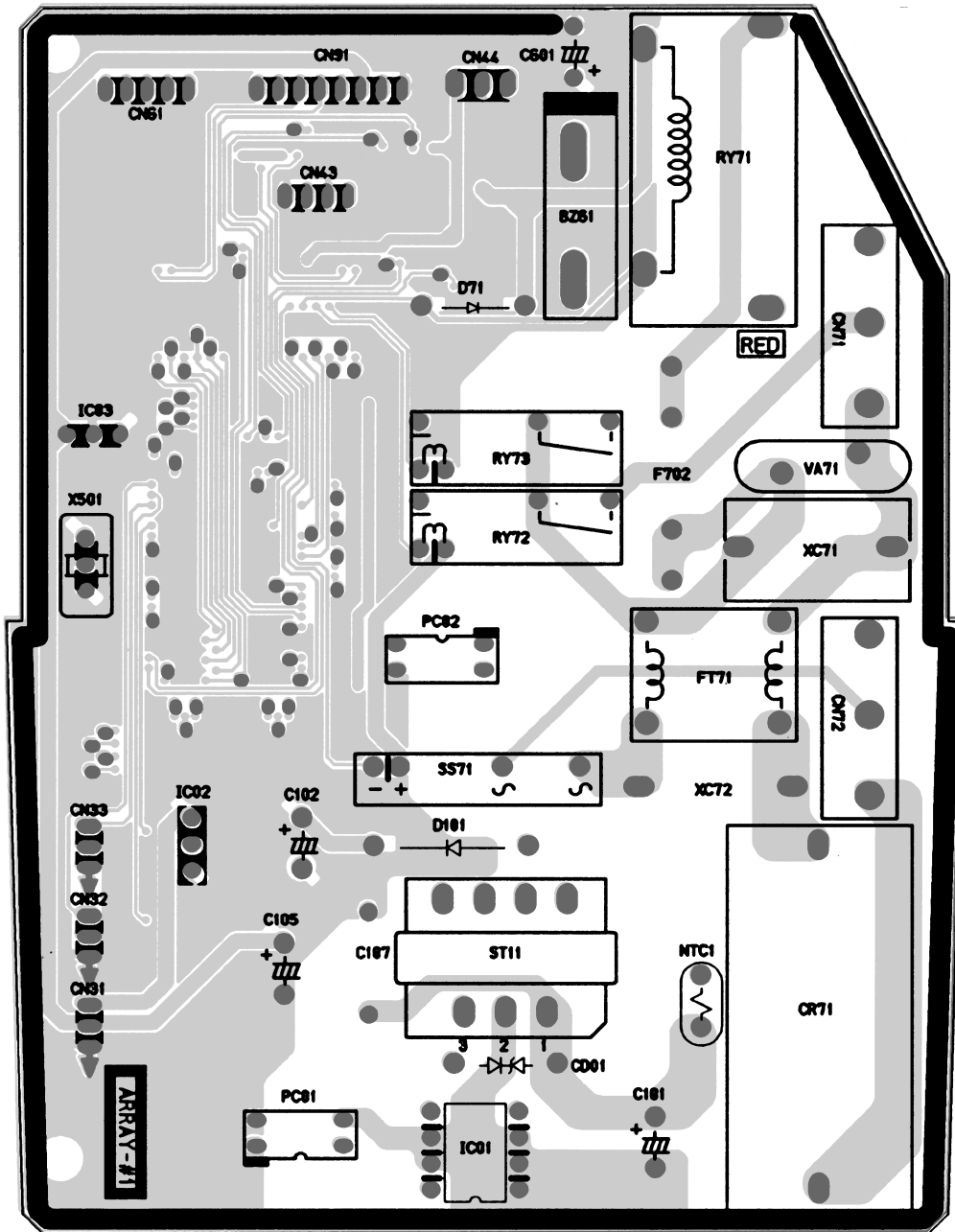
9. PCB Diagram

9-1 ASS'Y MAIN PCB(7K/9K/12K) : DB93-02447A

■ TOP



■ BOTTOM



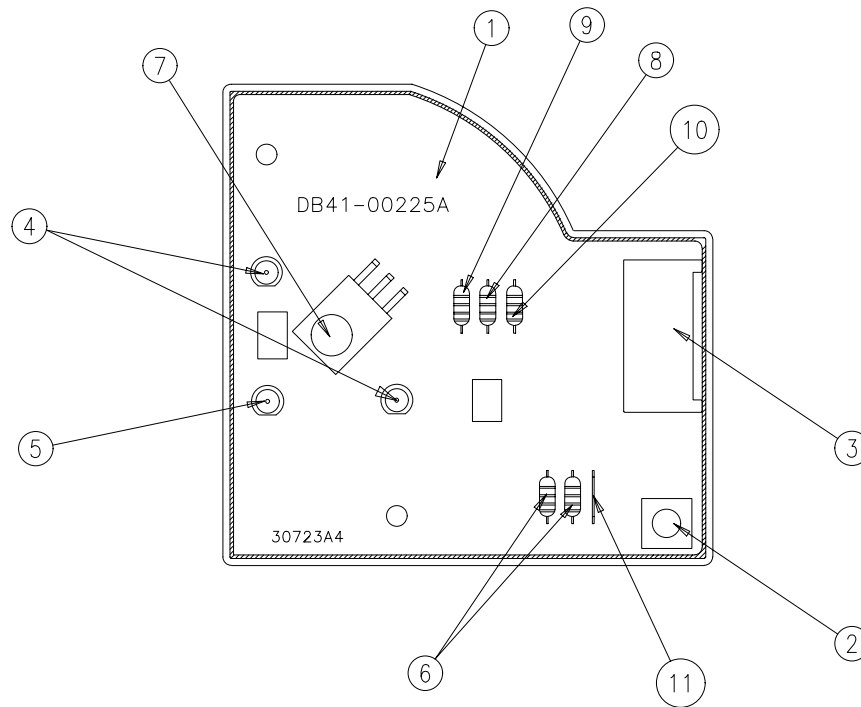
■ Parts List

Location No.	Description	Specification	Q'TY	Remark
D71	DIODE-RECTIFIER	UF4007,1KV,1A,DO-41,TP	1	SNA
D102	DIODE-RECTIFIER	UG2D,200V,2A,DO-204AC,TP	1	SNA
BD71	DIODE-BRIDGE	DF06S,600V,1A,SMD-4,TP	1	SNA
D101	DIODE-ZENER	BZX84C3V6,3.6,350mW,SOT-23,TP	1	SNA
D103	DIODE-ZENER	BZX84-C11,10.4-11.6V,350mW,SOT-23,TP	1	SNA
CD01	DIODE-TVS	ST02D-200,185/200/215V,200W,DO-214	1	SNA
Q201,Q401,Q601,Q603	TR-SMALL SIGNAL	2SC2412K,NPN,200mW,SOT-23,TP,1	4	SNA
Q602	TR-SMALL SIGNAL	MMST2907A,PNP,200mW,SOT-23,TP,100-300	1	SNA
Q901,Q902	TR-DIGITAL	DTA114EKA,PNP,200mW,10K/10K,SOT-23,TP	2	SNA
IC05,IC08	TR-ARRAY	2003,NPN,7,1W,SOP-16,ST,1000	2	SNA
PC01	PHOTO-COUPLER	TR,130-260%,200mW,DIP-4,ST	1	SNA
PC02	PHOTO-COUPLER	TR,50-150%,200mW,DIP-4,ST	1	SNA
IC51	IC-EEPROM	93LC56,128x16Bit,SOP,8P,150MIL,-,2.5V,-,PLASTIC -40to+85CC,1uA,CMOS,TP	1	SNA
IC03	IC-VOLTAGE COMP.	7533,TO-92,3P,-,SINGLE,-,PLASTIC	1	SNA
IC02	IC-POSI.ADJUST REG.	78L05A,TO-92,3P,-,PLASTIC,4.6	1	SNA
IC01	IC-PWM CONTROLLER	255,DIP,8P,300MIL,PLASTIC,-0.3/700V,-,-40TO+150C 530MA,-,ST	1	SNA
NTC1	THERMISTOR-NTC	220HM,1.4A,3100K,9.5mW/C,-,7.0,-	1	SNA
VA71	VARISTOR	560V,2500A,17.5x7.5mm,TP	1	SNA
R609	R-CHIP	560ohm,5%,1/8W,TP,2012	1	SNA
R102	R-CHIP	100ohm,5%,1/8W,TP,2012	1	SNA
R209,R501,R601,R603	R-CHIP	10Kohm,5%,1/8W,TP,2012	6	SNA
R605,R908				
R210,R211,R212,R301	R-CHIP	1Kohm,5%,1/8W,TP,2012	11	SNA
R302,R401,R402,R404				
R602,R604,R610				
R103	R-CHIP	220ohm,5%,1/8W,TP,2012	1	SNA
R405,R406	R-CHIP	330ohm,5%,1/8W,TP,2012	2	SNA
R606,R909	R-CHIP	4.7Kohm,5%,1/8W,TP,2012	2	SNA
R101,R607,R608	R-CHIP	470ohm,5%,1/8W,TP,2012	3	SNA
R201,R202,R203,R204	R-CHIP	47Kohm,5%,1/4W,TP,3216	8	SNA
R205,R206,R207,R208				
R407,R408	R-CHIP	6.8Kohm,1%,1/8W,TP,2012	2	
R403	R-CHIP	6.8Kohm,5%,1/8W,TP,2012	1	SNA
C107	C-CERAMIC,DISC	2.2NF,20%,400V,Y5U,BK,12.5x6mm,10	1	SNA
C103,C105,C106,C201	C-CER,CHIP	100nF,+80-20%,50V,Y5V,TP,2012	14	SNA
C204,C301,C302,C402				SNA
C403,C501,C502,C503				
C504,C901				
C401	C-CER,CHIP	1nF,10%,50V,X7R,TP,2012,-	1	SNA

■ Parts List(cont.)

Location No.	Description	Specification	Q'TY	Remark
C202,C203,C404	C-CER,CHIP	10nF,+80-20%,50V,Y5V,TP,2012	3	SNA
XC72,XC71	C-FILM,LEAD-PPF	100nF,10%,275V,BK,18x6x12,15	2	SNA
CR71	C-FILM,LEAD-PPF	1.2uF,10%,450Vac,BK,38x18x30,3	1	SNA
C102	C-AL	470uF,20%,25V,GP,TP,10x12.5mm	1	SNA
C101	C-AL	10uF,20%,450V,GP,TP,13x20mm,5m	1	SNA
C104	C-AL	470uF,20%,16V,GP,TP,10x12.5,5	1	SNA
C601	C-AL	47uF,20%,50V,GP,TP,6.3x11,5	1	SNA
X501	RESONATOR-CERAMIC	10MHz,0.5%,BK,8x3x5.5mm	1	SNA
BZ61	BUZZER-PIEZO	85DB,-,-,2KHz,-	1	SNA
RY71	RELAY-POWER	12VDC,0.9W,20000mA,SPST,20mS,10mS	1	SNA
RY72	RELAY-POWER	DC12V,3A 250V AC,-,-,10mS,10mS	1	SNA
RY73	RELAY-POWER	DC12V,3A 250V AC,-,-,10mS,10mS	1	SNA
SS71	SSR	12Vdc,-,2A,1mS,1mS	1	SNA
F702	FUSE-CLIP	250V,7.5A,30mohm	1	SNA
F702	FUSE-CARTRIDGE	250V,3.15A,TIME-LAG,GLASS,5x20mm	1	SNA
CN71	CONNECTOR-HEADER	1WALL,3P,1R,7.92mm,STRAIGHT,SN,BLU	1	SNA
CN72	CONNECTOR-HEADER	1WALL,3P,1R,7.92mm,STRAIGHT,SN,WHT	1	SNA
CN91	CONNECTOR-HEADER	BOX,8P,1R,2mm,ANGLE,SN	1	SNA
CN61	CONNECTOR-HEADER	BOX,5P,1R,2mm,ANGLE,SN,WHT	1	SNA
CN43	CONNECTOR-HEADER	BOX,4P,1R,2mm,STRAIGHT,SN	1	SNA
CN44	CONNECTOR-HEADER	BOX,3P,1R,2.5mm,ANGLE,TIN,BLU	1	SNA
IC04	IC MICOM	S3C848AXZZ-QTRA,-,64P,+5V,10MHz,STM-0219-EA	1	SNA
ST11	TRANS SWITCHING	EI1916-048,SS-P/J,-,200V~240V,-,-,EI1916,50/60Hz,- 1.6mH(1P-3P),-,-,-,-	1	SNA
FT71	COIL CHOKE	USAV-07153,UU1116,15.0mH,-25°C~+85°C,-,1.3ohm,- 15mH,105,20x18mm,13,0.6,BK,-25°C	1	SNA
-	PCB BOARD	FR-4	1	SNA

9-2 ASS'Y SUB PCB(7K/9K/12K) : DB93-02525A



■ Parts List

No.	Description	Specification	Q'TY	Remark
1	PCB-DISPLAY	FR-1	1	SNA
2	TACT SWITCH	YTP-1280A	1	SNA
3	CONNECTOR	SMSW200-08(WHT)	1	SNA
4	LED-LAMP	GRN(SM3517)	2	SNA
5	LED-LAMP	ORG(SO3517)	1	SNA
6	RESISTOR	470ohm,1/2W	1	SNA
7	MODULE REMOCON	FRP4021H10	1	SNA
8	DIODE	1N4148	1	SNA
9	C-CERAMIC	1nF/50V	1	SNA
10	C-CERAMIC	100nF/50V	1	SNA
11	JUMPER	10mm	1	SNA