

# WALL MOUNTED AND CEILING WALL SPLIT SYSTEMS

## PERFORMANCE DATA

### *TROPICAL MODEL*

( HEAT PUMP )

#### C O N T E N T S

1. SPECIFICATIONS .....	1
2. DIMENSIONAL OUTLINE DRAWING .....	2
3. CIRCUIT DIAGRAM .....	5
4. REMOTE CONTROL UNIT .....	7
5. REFRIGERANT CYCLE .....	8
6. REFRIGERANT CHARGING .....	10
7. TEMPERATURE RANGE .....	11
8. AIR VELOCITY DISTRIBUTION .....	12
9. PERFORMANCE CURVE .....	14
10. NOISE LEVEL MEASUREMENT .....	15

# 1. SPECIFICATIONS

## 1.1 WALL MOUNTED & CEILING WALL

TYPE		COOL & HEAT	COOL & HEAT	COOL & HEAT	COOL & HEAT	COOL & HEAT	COOL & HEAT
INDOOR UNIT		AS□18RGF-W	AS□24RGF-W	AS□30RGF-W	AW□18RGA-W	AW□24RGA-W	AW□30RGA-W
OUTDOOR UNIT		AO□18RZEL	AO□24RZEL	AO□30RVAL	AO□18RZEL	AO□24RZEL	AO□30RVAL
COOLING CAPACITY	(kW)	5.30 - 5.40	6.80 - 6.90	7.80 - 8.00	5.30 - 5.40	6.80 - 6.90	7.80 - 8.00
HEATING CAPACITY		5.50 - 5.60	7.70 - 7.80	8.55 - 8.80	5.50 - 5.60	7.70 - 7.80	8.55 - 8.80

### ELECTRICAL DATA

POWER SOURCE (V)		220 - 240					
FREQUENCY (Hz)		50					
RUNNING CURRENT (A)	COOLING	10.6 - 10.2	12.6 - 12.8	14.6 - 15.3	10.6 - 10.2	12.6 - 12.8	14.6 - 15.3
	HEATING	9.2 - 9.3	12.0 - 12.3	13.7 - 14.8	9.2 - 9.3	12.0 - 12.3	13.7 - 14.8
INPUT WATTS (kW)	COOLING	2.20 - 2.23	2.65 - 2.74	3.07 - 3.19	2.20 - 2.23	2.65 - 2.74	3.07 - 3.20
	HEATING	1.89 - 1.94	2.51 - 2.60	2.85 - 2.96	1.89 - 1.94	2.51 - 2.60	2.85 - 2.96
E.E.R. (kW/kW)	COOLING	2.41 - 2.42	2.57 - 2.52	2.54 - 2.51	2.41 - 2.42	2.57 - 2.52	2.54 - 2.51
	HEATING	2.91 - 2.89	3.07 - 3.00	3.00 - 2.97	2.91 - 2.89	3.07 - 3.00	3.00 - 2.97
MOISTURE REMOVAL (ℓ/hr)		2.0	2.5	3.0	2.0	2.5	3.0
AIR CIRCULATION-Hi (m <sup>3</sup> /hr)		900	1,000	1,100	850	1000	1050

### COMPRESSOR

TYPE		Hermetic type, Deposit electrode condenser, 2 poles, Single phase, Induction motor					
CODE		AWG5524EXC-4	AWG5532EXC-4	H23A42QABKA	AWG5524EXC-4	AWG5532EXC-4	H23A42QABKA
REFRIGERANT	R-22 (g)	1,300	1,950	2,350	1,300	1,950	2,350

### FAN MOTOR

POWER SOURCE (V)		220 - 240					
INDOOR UNIT	TYPE	MFA-30HTT			MFD-30HO		
	HI-SPEED (r.p.m.)	1,080	1,190	1,320	1,150	1,300	1,380
	MED-SPEED (r.p.m.)	940	1,030	1,220	1,030	1,160	1,280
	LO-SPEED (r.p.m.)	810	900	1,030	930	1,020	1,180
OUTDOOR UNIT	TYPE	MFB-247FBT	MFB-247FBT	MFB-30DFT	MFB-247FBT	MFB-247FBT	MFB-30DFT
	(r.p.m.)	735		730	735		730

### DIMENSIONS

INDOOR UNIT	H x W x D	320 x 1,120 x 220		270 x 1,150 x 285		
OUTDOOR UNIT	(mm)	643 x 840 x 336		900 x 900 x 350	643 x 840 x 336	
					900 x 900 x 350	

### WEIGHT

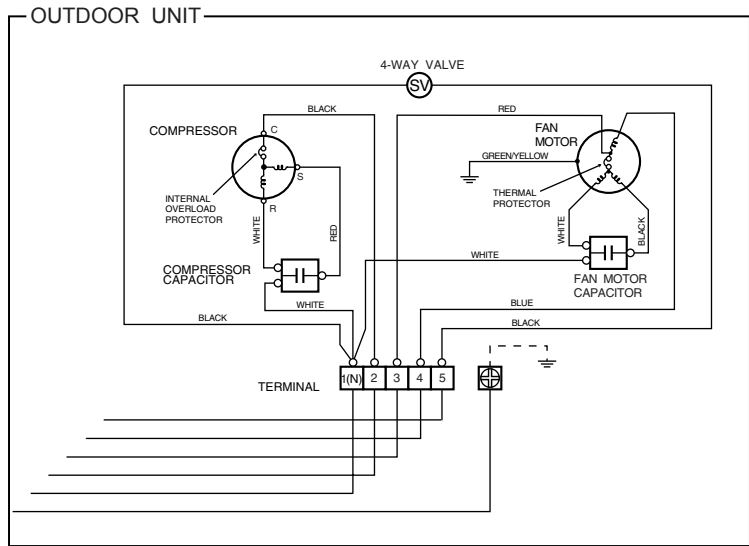
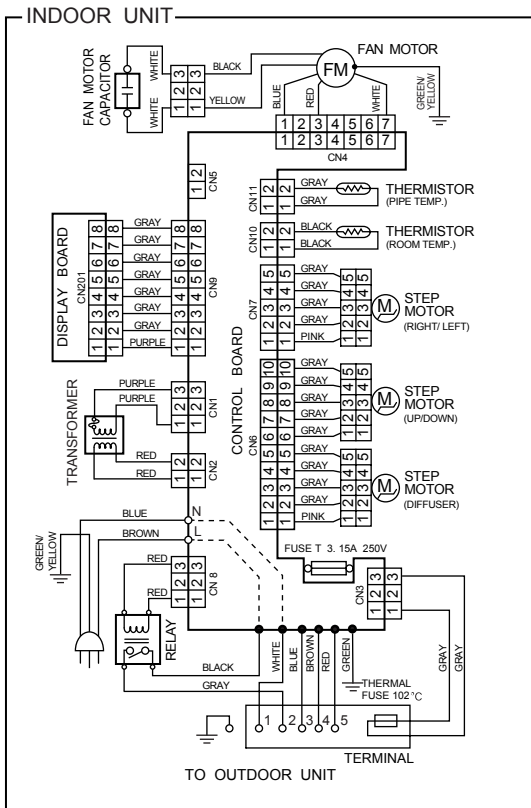
INDOOR UNIT	GROSS / NET	22 / 16			20 / 16		
OUTDOOR UNIT	(kg)	76 / 68	76 / 68	97 / 85	76 / 68	76 / 68	97 / 85

### REFRIGERANT CHARGE

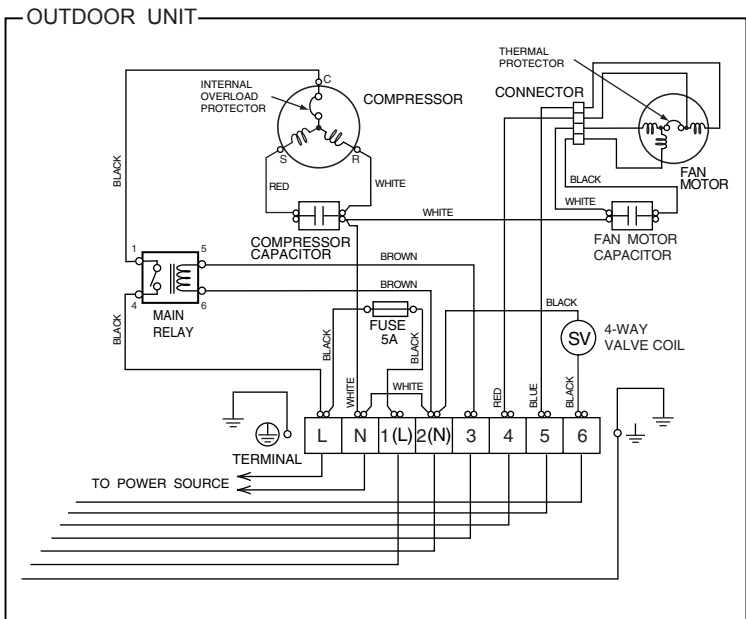
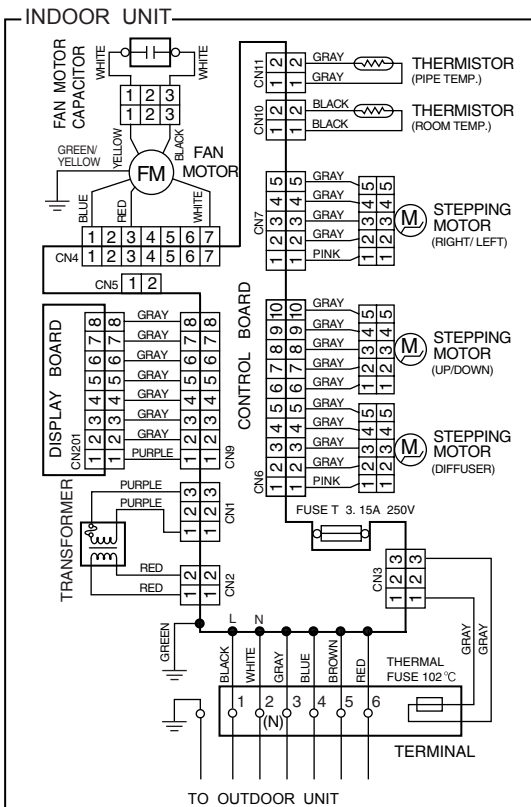
PIPE LENGTH		7.5 m (25 ft)	10 m (33 ft)	15 m (49 ft)	20 m (66 ft)	25 m (82 ft)	Additional refrigerant
MODELS							
FULL CHARGE AMOUNT	ASG18RGF-W	1,900 g (67.0 oz)	2,000 g (70.5 oz)	2,200 g (77.6 oz)	2,400 g (84.7 oz)	—	40 g (1.41 oz)/1 m(3.3ft) (over 7.5 m)
	ASG24RGF-W	2,050 g (72.3 oz)	2,150 g (75.8 oz)	2,350 g (82.9 oz)	2,550 g (89.9 oz)	—	40 g (1.41 oz)/1 m(3.3ft) (over 7.5 m)
	ASG30RGF-W	2,450 g (86.4 oz)	2,550 g (89.9 oz)	2,750 g (97.0 oz)	2,950 g (104.1 oz)	3,150 g (111.1 oz)	40 g (1.41 oz)/1 m(3.3ft) (over 7.5 m)
	AWG18RGA-W	1,900 g (67.0 oz)	2,000 g (70.5 oz)	2,200 g (97.6 oz)	2,400 g (84.7 oz)	—	40 g (1.41 oz)/1 m(3.3ft) (over 7.5 m)
	AWG24RGA-W	2,050 g (72.3 oz)	2,150 g (75.8 oz)	2,350 g (82.9 oz)	2,550 g (89.9 oz)	—	40 g (1.41 oz)/1 m(3.3ft) (over 7.5 m)
	AWG30RGA-W	2,450 g (86.4 oz)	2,550 g (89.9 oz)	2,750 g (97.0 oz)	2,950 g (104.1 oz)	3,150 g (111.1 oz)	40 g (1.41 oz)/1 m(3.3ft) (over 7.5 m)

# 3. CIRCUIT DIAGRAM

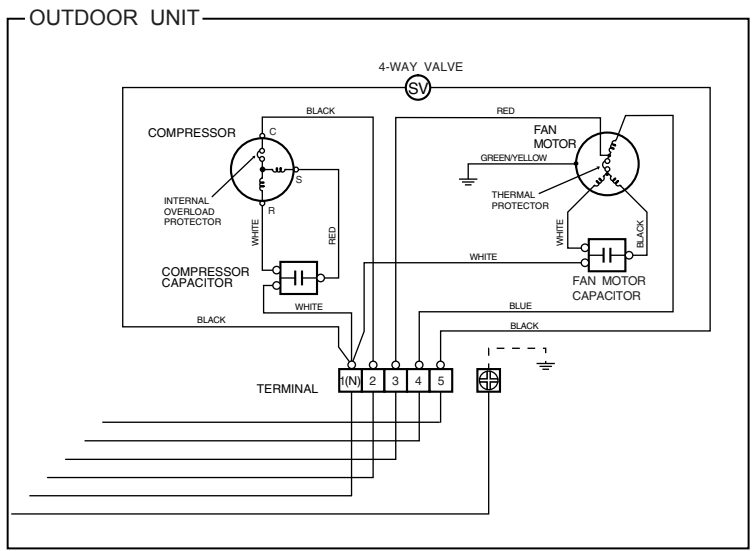
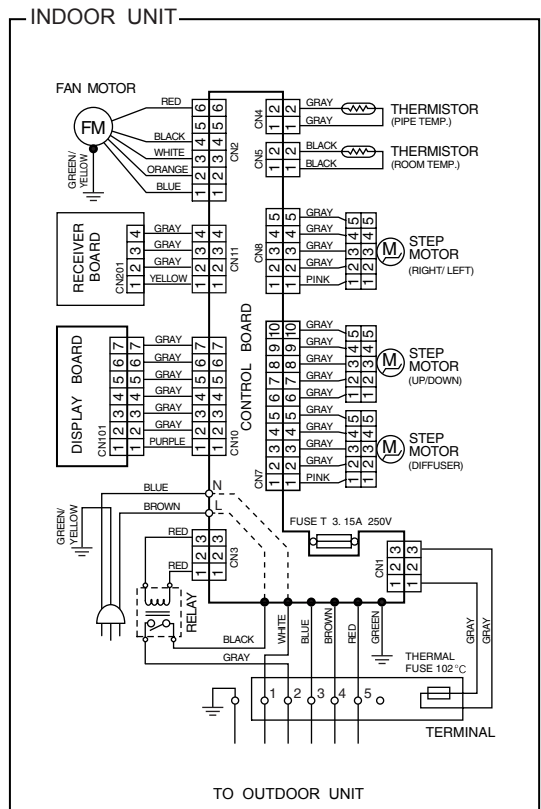
## 3.1 AS □ 18R / 24R



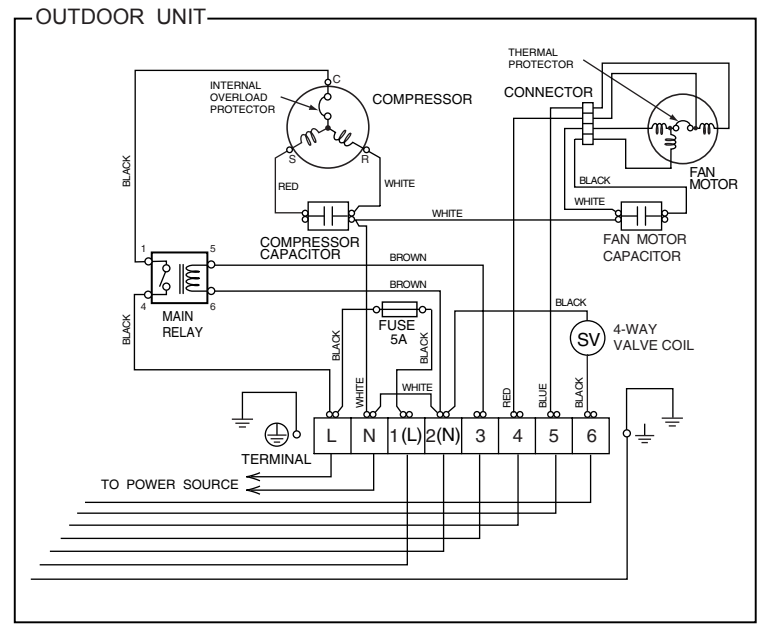
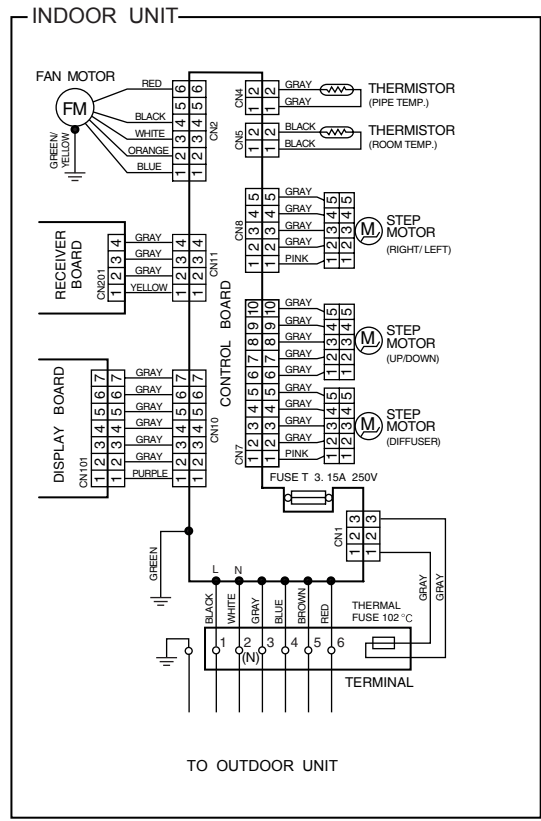
## 3.2 AS □ 30R



# 3.3 AW □ 18R / 24R

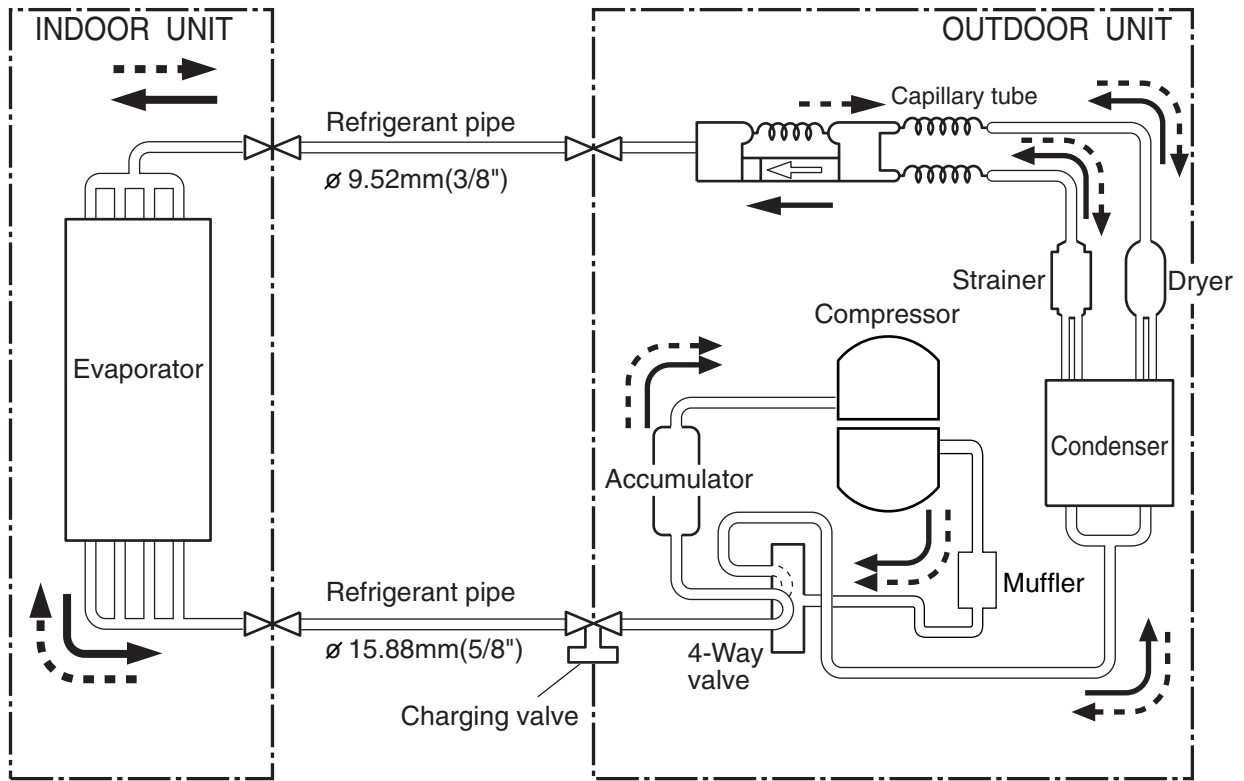


# 3.4 AW □ 30R

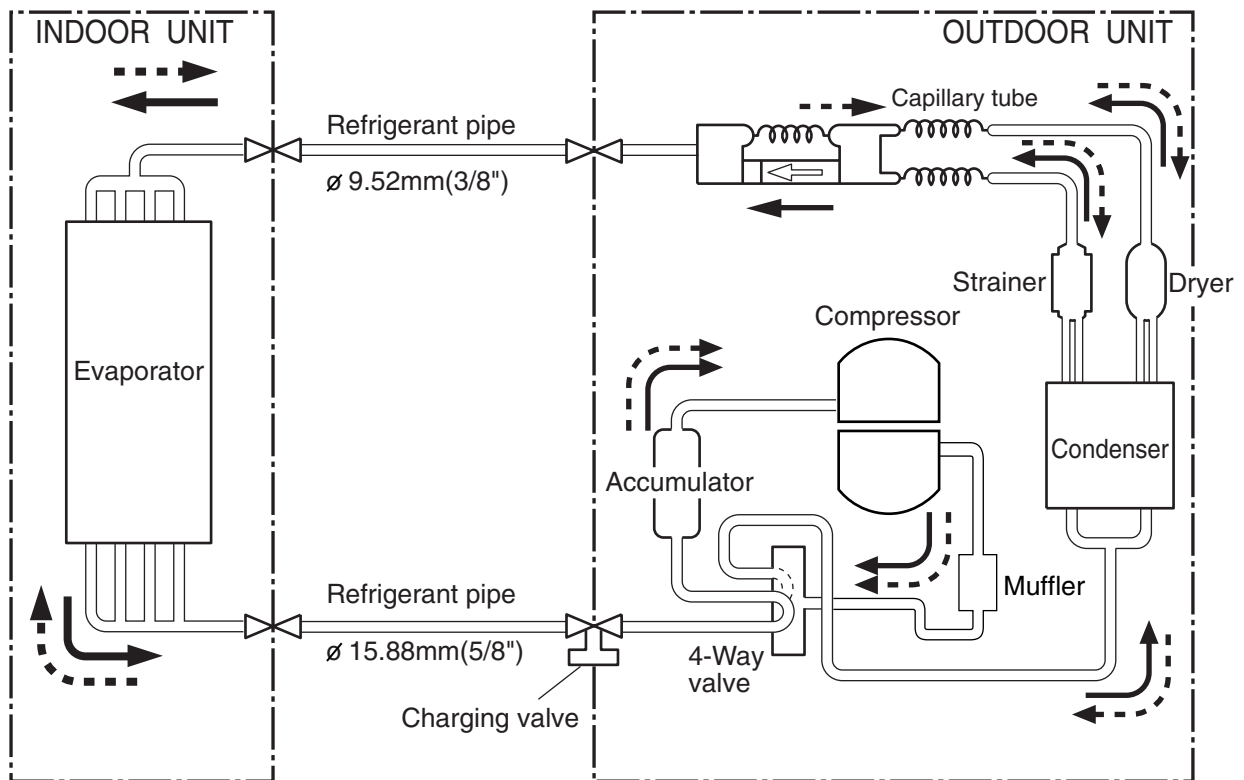


# 5. REFRIGERANT CYCLE

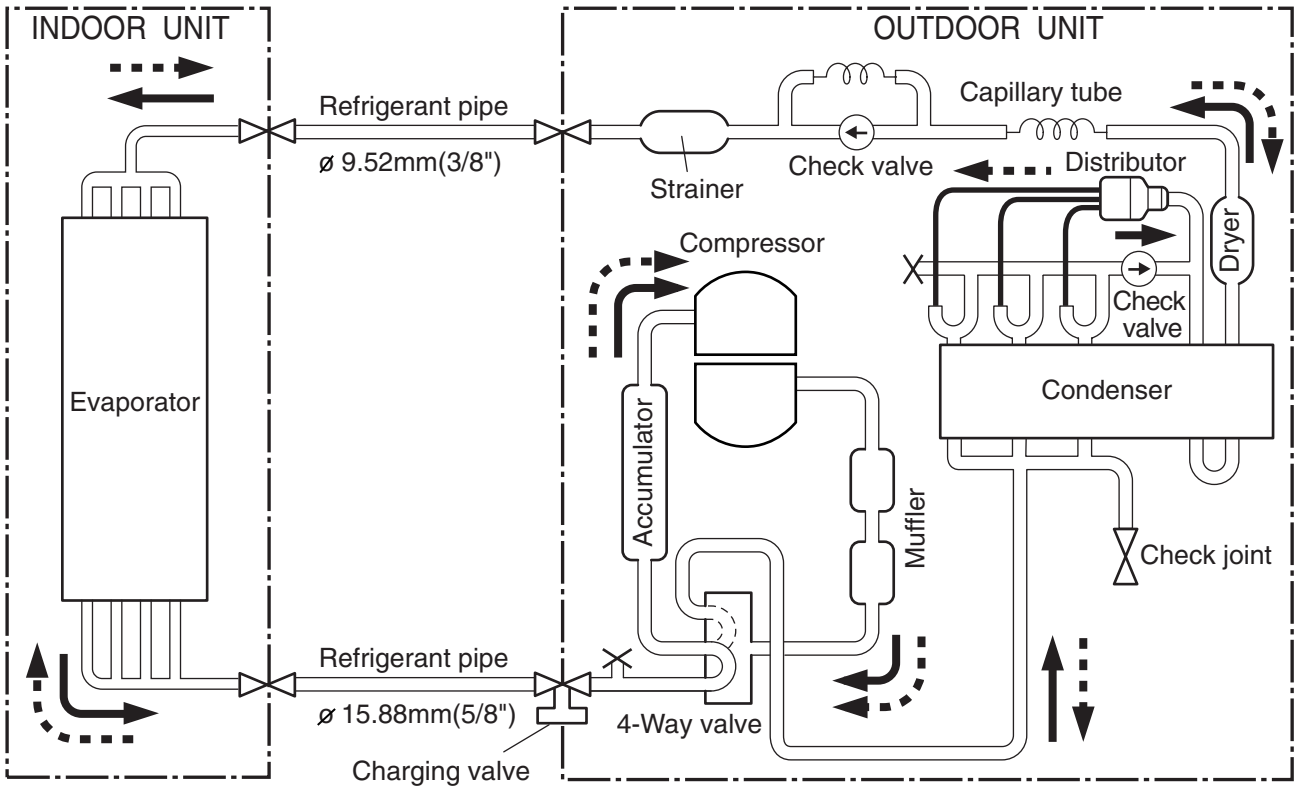
## 5.1 AS □ 18R, AW □ 18R






## 5.2 AS □ 24R, AW □ 24R



# 5.3 AW □ 30R, AW □ 30R



 Cooling  
 Heating  
 : Flare coupling

# 7. TEMPERATURE RANGE

---

MODELS		TEMPERATURE RANGE	
		INDOOR	OUTDOOR
AS □ 18R AS □ 24R	COOL	About 18 to 32 °C	About 0 to 52 °C
	DRY		
AW □ 18R AW □ 24R	HEAT	About 30 °C or less	About 0 to 24 °C
AS □ 30R	COOL	About 18 to 32 °C	About 0 to 52 °C
	DRY		
AW □ 30R	HEAT	About 30 °C or less	About -5 to 24 °C