

S R 0 6 1 Y

3PH, 380/420V – 50Hz

Application Range

Compressor Cooling	Natural	
Eva. Temp. Range	-10°C ~ 12°C	14°F ~ 54°F
Condensing Temp.	65°C max.	149°F max.
Return Gas Temp.	35°C max.	95°F max.
Discharge gas Temp.	130°C max.	266°F max.
Motor Wire Temp.	135°C max.	275°F max.

Rated Performance

Capacity	49,500/50,000 Btu/h	14,506/14,652 Watts
Motor Input	4,500/4,545 W	
Current	8.0/8.0 A	
EER	11.0/11.0 Btu/W.h	3.22/3.22 W/W

Compressor Data

Design	Scroll Type	
Displacement	85.6 cc/rev	5.20 in ³ /rev
Oil / Oil Charge	SUNISO 4GSI / 1,800 cc	
Weight	38.0 Kg	83.74 lb

Motor Data

Motor Type	2 Pole Induction (PSC)
Rated Output	4,050 W
Winding Resistance (at 25°C)	U – V 3.09 ±7% Ω V – W 3.02 ±7% Ω W – V 3.14 ±7% Ω
Voltage Range	342 V to 462 V
Locked Rotor Amps.	47 / 57 Amps.

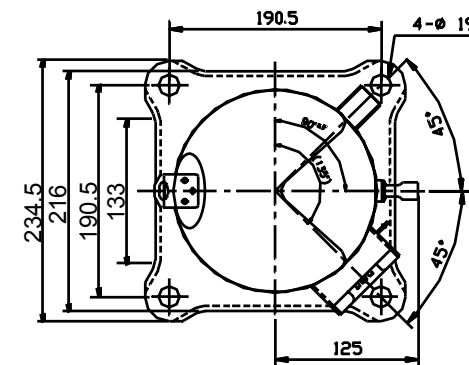
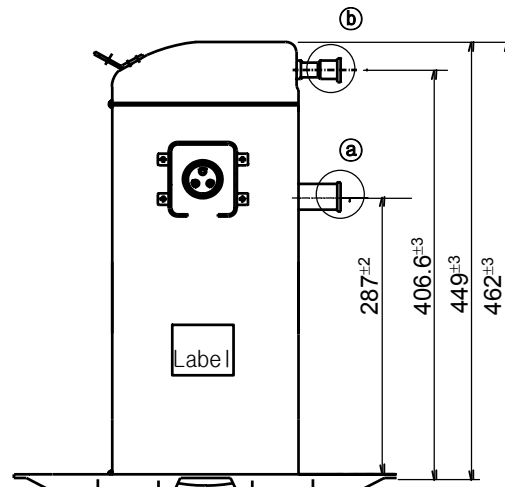
Electrical Components

Running Capacitor	- μF - VAC
Overload Protector	35HM-231 (Internal Type)

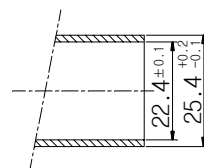
Capacity Test Conditions

Evaporating Temp.	7.2°C	45°F
Condensing Temp.	54.4°C	130°F
Return Gas Temp.	18.3°C	65°F
Liquid Temp.	46.1°C	115°F
Ambient Temp.	35.0°C	95°F

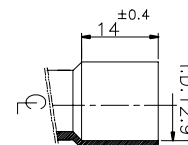
Standard Dimensions



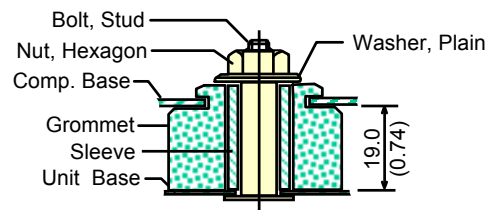
Detail of (a)



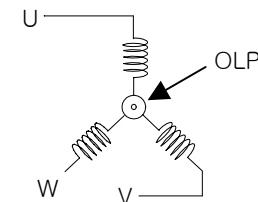
Detail of (b)



Compressor Mounting



Wiring Diagram



* U.V.W mark is embossed on a Cover Terminal